

# IDD Best Practices for Law Enforcement and Jails



# Introductions



Brandon Wood  
Executive Director  
Texas Commission on Jail Standards  
Austin, Texas



Jenny Goode  
Chief Executive Officer  
Betty Hardwick Center  
Abilene, Texas





## Today's Overview

- Understanding Intellectual & Developmental Disability
- Education and Training Ideas
- Community Based Services Available
- Crisis & Law Enforcement Initiatives
- Jail Partnerships

# What is Intellectual Disability?

- Intellectual disability is a condition characterized by significant limitations in reasoning, learning, problem-solving, and practical and social skills.
- Formerly described by the term “mental retardation” (now considered disrespectful), intellectual disability is often evident at birth or in early childhood and must have occurred before age 18.
- Causes include trauma and genetic conditions, such as Down syndrome, Fragile X, and Rett’s syndrome.
- People with intellectual disabilities face higher rates of abuse, neglect, and exploitation than the general population and people with other disabilities.
- Texas is home to an estimated 500,000 children and adults with IDD.







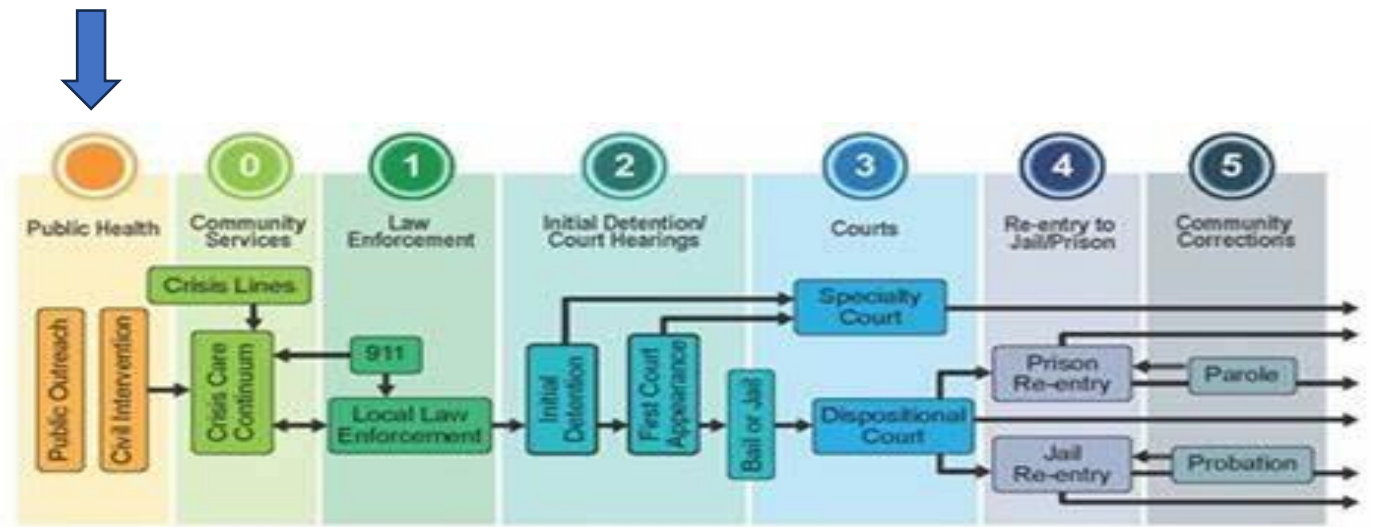
“less than 4% of the population has IDD, yet up to 10% of prison and jail population has such disabilities” – Bureau of Justice Statistics

”

“Persons with IDD are more likely to face additional challenges while incarcerated. These include an increased risk of being arrested, convicted, incarcerated, and/or to serve a longer sentence without equal opportunity for probation or parole when compared to peers without IDD” --Texas Statewide Behavioral Health Strategic Plan Update, 2019



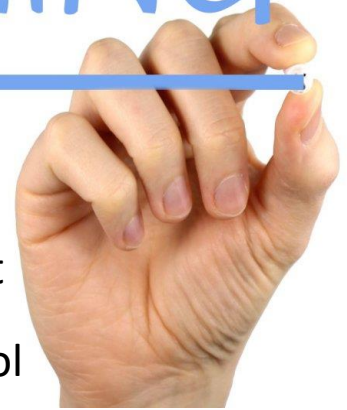
# Education and Training



## Possibilities

# TRAINING

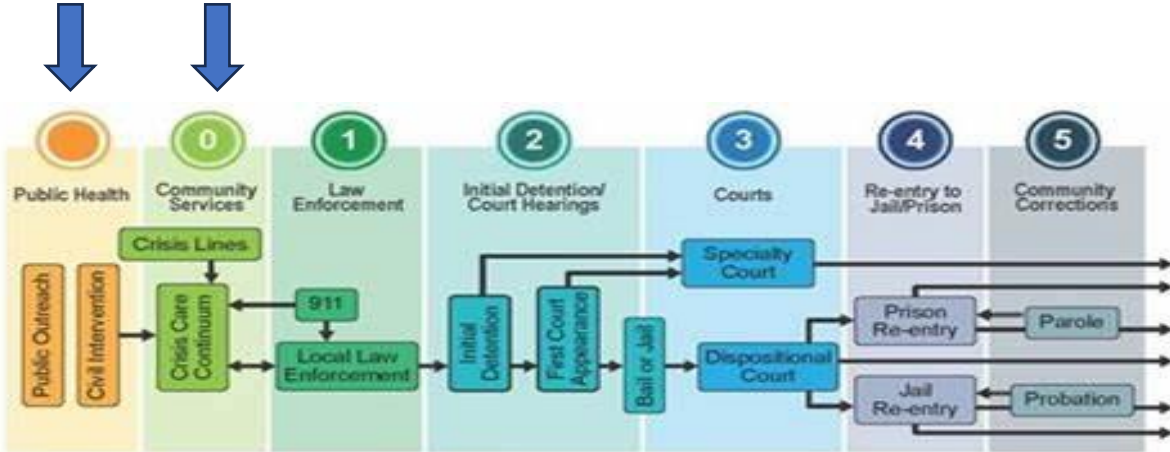
---



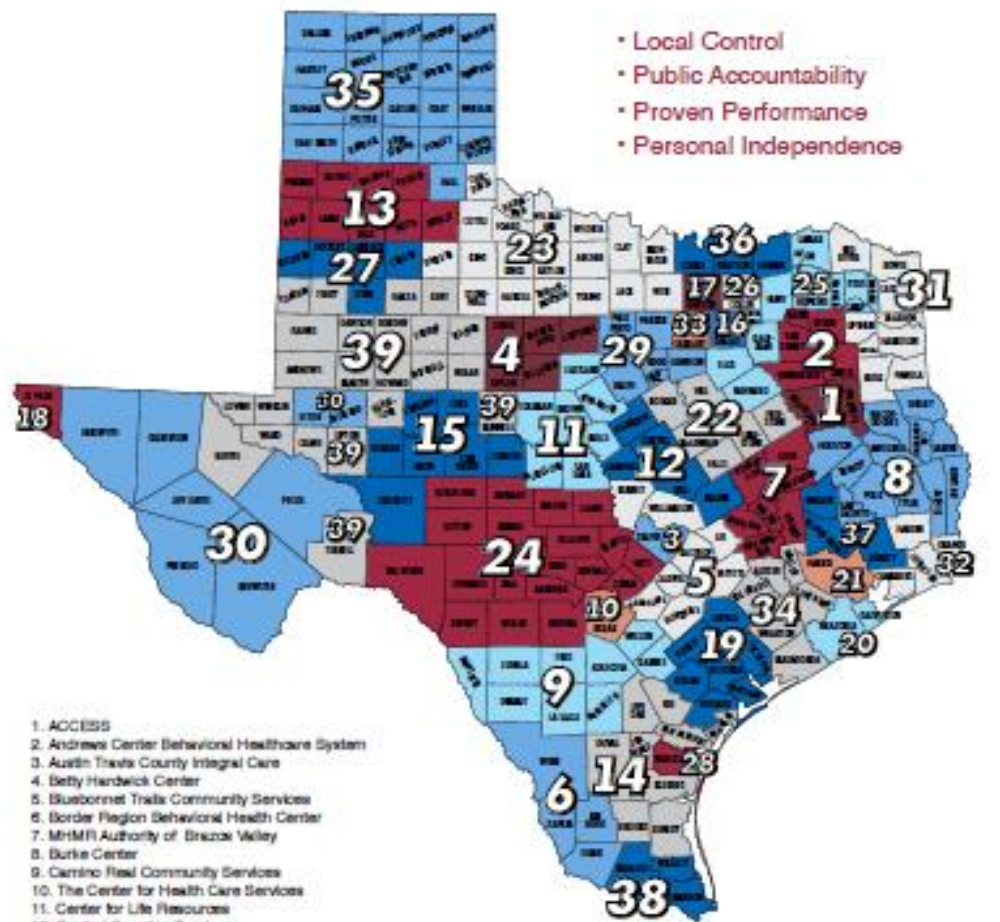
- Mental Health First Aid
- START Online Course on the MH Aspects of IDD for Mobile Crisis Responders  
[START IDD-MH Mobile Crisis Responder 2023 Fall | UNH Learn for Life](#)
- LIDDA/LMHA Training in local Law Enforcement (Police/Sheriff) Academy or Patrol Briefings
- Crisis Intervention Training for TCOLE – IDD and MH staff involvement
- TCOLE Interacting With Persons with IDD for Jailers



# Community Based Services



# Community Centers of Texas



- Local Control
- Public Accountability
- Proven Performance
- Personal Independence

1. ACCESS
2. Andrews Center Behavioral Healthcare System
3. Austin Travis County Integral Care
4. Betty Handwick Center
5. Bluebonnet Trails Community Services
6. Border Region Behavioral Health Center
7. MHMR Authority of Brazos Valley
8. Burke Center
9. Camino Real Community Services
10. The Center for Health Care Services
11. Center for Life Resources
12. Central Counties Services
13. Central Plains Center
14. Coastal Plains Community Center
15. MHMR Services for the Concho Valley
16. Metrocare Services
17. Denton County MHMR Center
18. Emergence Health Network
19. Gulf Bend Center
20. Gulf Coast Center
21. MHMR Authority of Harris County
22. Heart of Texas Region MHMR Center
23. Hidden Falls/See Centers
24. Hill Country Mental Health and Developmental Disabilities Centers
25. Lakes Regional MHMR Center
26. LifePath Systems
27. StarCare Specialty Health System
28. Behavioral Health Center of Nueces County
29. Pecos Valley Centers for Behavioral & Developmental HealthCare
30. Permian Basin Community Centers
31. Community Healthcare
32. Spindletop Center
33. MHMR of Tarrant County
34. Texans Center
35. Texas Panhandle Centers
36. Teosma Community Center
37. Tri-County Services
38. Tropical Texas Behavioral Health
39. West Texas Centers

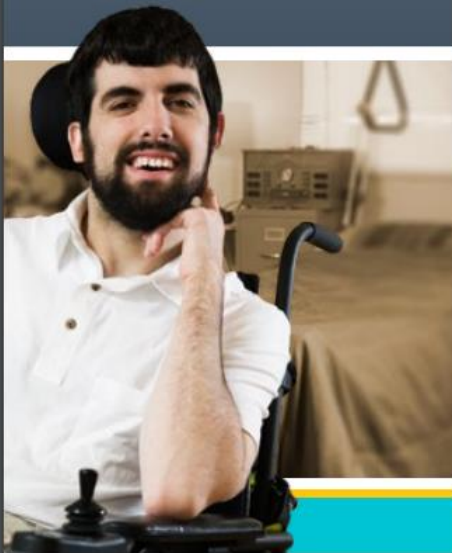
# Local IDD Authority Roles & Functions

- Determinations of Intellectual Disability (DIDs); ID Related Conditions Assessments
- Interest List Management
- Waiver Enrollments (HCS/Texas Home Living)
- Service Coordination (Targeted Case Management)
- Assessments (Community First Choice)
- Community Living Options & Information Process (CLOIP)
- Continuity of Care (for persons in and transitioning from SSLCs)
- Permanency Planning for Children
- Preadmission Screening and Resident Review (PASRR)
- Transition Planning (for persons moving from nursing homes)
- GR Safety Net Services (e.g., respite, day habilitation; employment assistance; specialized therapies)
- Crisis Response & Behavioral Support (limited coverage)
- Responsibilities when provider closes or is decertified
- Disaster Response



# Residential Options

for Individuals with an Intellectual Disability or Related Condition



TEXAS  
Health and Human  
Services



## State Supported Living Centers

SSLCs provide 24-hour residential services in a structured environment for people with intellectual disabilities. Residents live in a safe, campus-based setting where they receive individualized onsite behavioral treatment and health care, including primary and specialty medical care, psychiatry, nursing and dental. Additional on-campus services include:

- Clinical therapies provided by full-time professional staff
- 24/7 one-to-one supervision as needed
- 24/7 video surveillance of living, dining and day program areas
- Vocational and employment services, skills training and habilitation services
- Customized adaptive aids, including seating and positioning devices
- Specialized, quality-controlled meals to fit a wide variety of diets
- Religious services for different faiths

SSLCs also provide services such as transportation and staff, so residents may maintain connections with their families and natural support systems. Planned activities, such as shopping, dining out, going to movies and other leisure activities provide recreation in residents' local communities.

There are 13 SSLCs across Texas (Abilene, Austin, Brenham, Corpus Christi, Denton, El Paso, Harlingen, Lubbock, Lufkin, Mexia, Richmond, San Angelo and San Antonio). Each SSLC serves between 60 and 460 residents.

Search for a vacancy at an SSLC at <https://apps.hhs.texas.gov/icfsearch>



## Community-based Intermediate Care Facility for Individuals with an Intellectual Disability or Related Conditions

Community-based ICFs/IID provide 24-hour residential services for people with intellectual disabilities or related conditions. Residents have access to comprehensive and individualized services and supports in their local communities including:

- Primary and specialty medical care
- Behavioral treatment
- Clinical therapies
- Nursing
- Dental treatment
- Vocational and employment services, skills training and habilitation services
- Adaptive aids
- Specialized diets
- Planned activities such as shopping, dining out, going to movies and other recreational and leisure activities in their local communities

Most community-based ICFs/IID across Texas serve people in homes that accommodate up to six people; however a few are larger.

Search for a vacancy at a community-based ICF/IID at <https://apps.hhs.texas.gov/icfsearch>



## Home and Community-based Services Program: Group Home or Host Home and Companion Care

The HCS program can provide 24-hour residential assistance for people with intellectual disabilities or related conditions who live in:

- A group home where no more than four people receiving services live.
- A host home and companion care setting.

The HCS program provides services across Texas for people to successfully integrate into their local community and have opportunities to participate as citizens to the maximum extent possible, whether they are receiving 24-hour residential services or services in their own home or family's home.

A person receiving HCS residential assistance has access to:

- Comprehensive and individualized primary and specialty medical care
- Behavioral support
- Day habilitation
- Clinical therapies
- Dental treatment
- Nursing
- Employment assistance and supported employment
- Adaptive aids
- Minor home modifications
- Activities designed to provide recreational integration into their local community, including shopping, dining out, going to movies and other leisure activities

Service coordination is provided by the local intellectual and developmental disability authority.

There is an interest list for the HCS program.

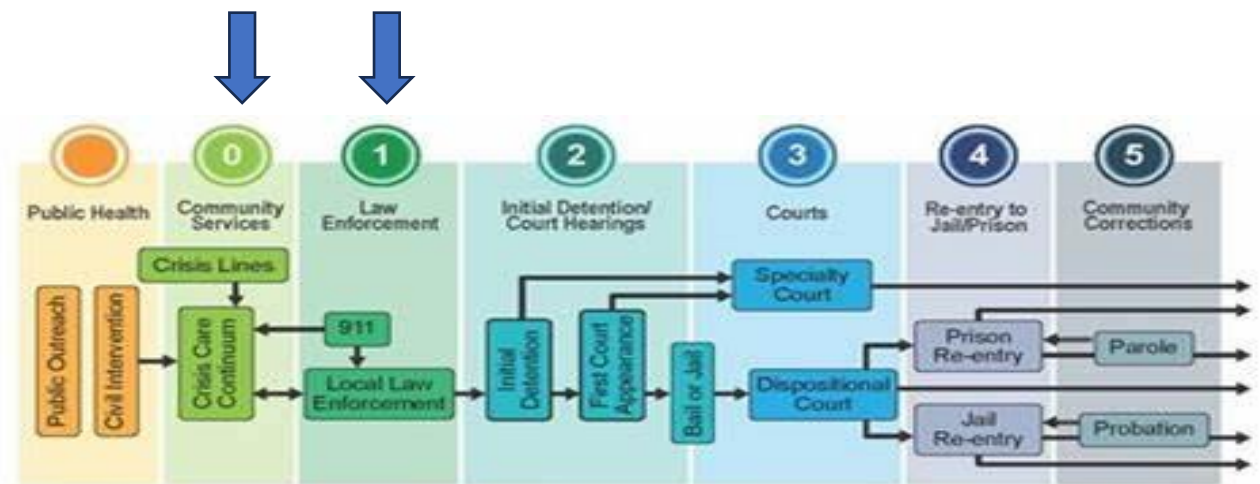
Search for a vacancy at a HCS group home at <https://apps.hhs.texas.gov/hcssearch>



For more information about services and supports for individuals with intellectual and developmental disabilities contact your local IDD authority at:

To find the local IDD authority that serves your area go to <https://apps.hhs.texas.gov/contact/search.cfm>

# Crisis & Law Enforcement Services





# Crisis Services LMHA/LIDDA

- Hotline available 24/7
- Clinicians in Dispatch
- Diversion Centers
- Mobile Crisis Outreach Teams
- Co Responder Teams -  
<https://www.youtube.com/watch?v=fONRJohRpeY>
- IDD Crisis Intervention Specialists
- IDD Crisis Respite





# IDD Crisis Specialist

- 84<sup>th</sup> Legislature created these positions
- Identifies persons with IDD in the LIDDA's local service area who are at risk of requiring crisis services, such as persons who exhibit repeated and severe behavior disturbances that jeopardize the person's safety or current living arrangement.
  - Abilene - Review 911 group home calls
  - Brownwood Receives Direct LE referrals
- Review jail match reports and assisting in discharge planning for persons processed into correctional institutions who have been identified as receiving services from the LIDDA
- collaborates with the correctional institution to:
  - clarify the status of the person;
  - pull the person from the general population, if not already separated;
  - identify treatment or service needs; and
  - coordinate collaborative post release diversion initiatives to assist the person in discharging from the correctional institution.



# IDD Crisis Response

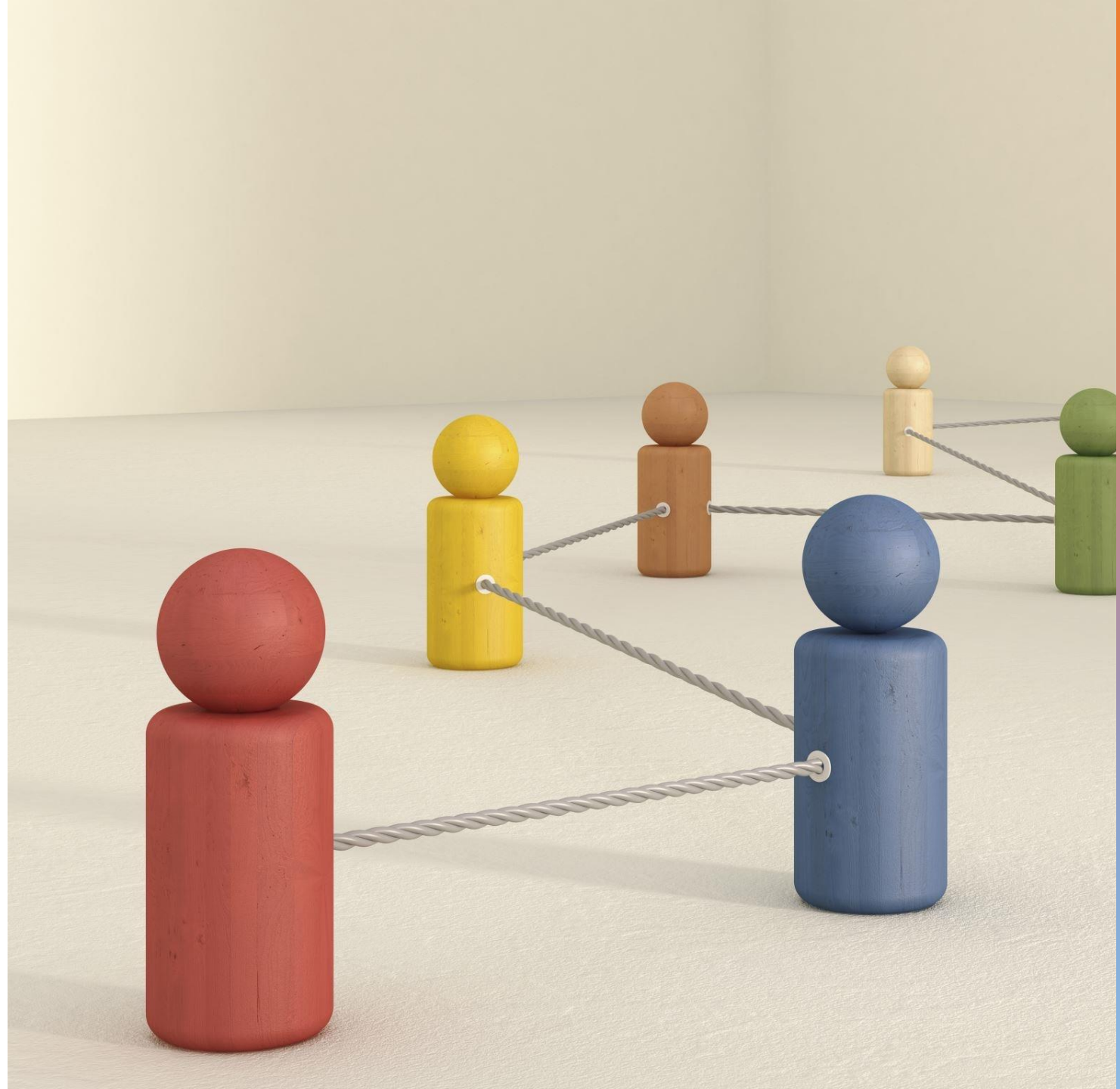


## Emergence Health Network

- Assessment of Needs
  - After CIS involvement in responding to crisis in the community, we collect data on what type of crisis needed law enforcement or CIT assistance. Additionally, we conducted surveys to collect community input from group homes that called 911 consistently, and input from our disability rights officer.
- Resource Development
  - CIT and CIS promote each other on their informational materials and trainings as well as intersect each other's protocols, that can assist law enforcement officers in the field.
- Crisis Hotline
  - Hotline will dispatch any calls to CIS where law enforcement or CIT has identified an individual with IDD in crisis in the community or even Hospitals.
- Crisis Response Protocol
  - Clear crisis response protocols should be established, outlining the steps law enforcement offices should follow when encountering a crisis involving an individual with IDD. These protocols should emphasize de-escalation, communication to CIS for crisis response or consultation.
- Crisis resolved, now what?
  - Develop a clear plan. What did the crisis teach us about the person?
  - Was this a situational crisis? Or an ongoing unresolved issue resulting in chronic crisis episodes?
  - Have we identified the appropriate linkage and resources?
  - Crisis Follow-Up
- How to integrate a good treatment team post-crisis?
  - Debrief with care providers, group homes staff, families, and doctors.
  - Always maintain an open line of communication.
  - Triage can be useful here, helping identify root cause, but also immediate steps to take to help mitigate crisis from escalating.
  - Not here to replace services, but to COMPLEMENT other professional services.

# Diversion Centers

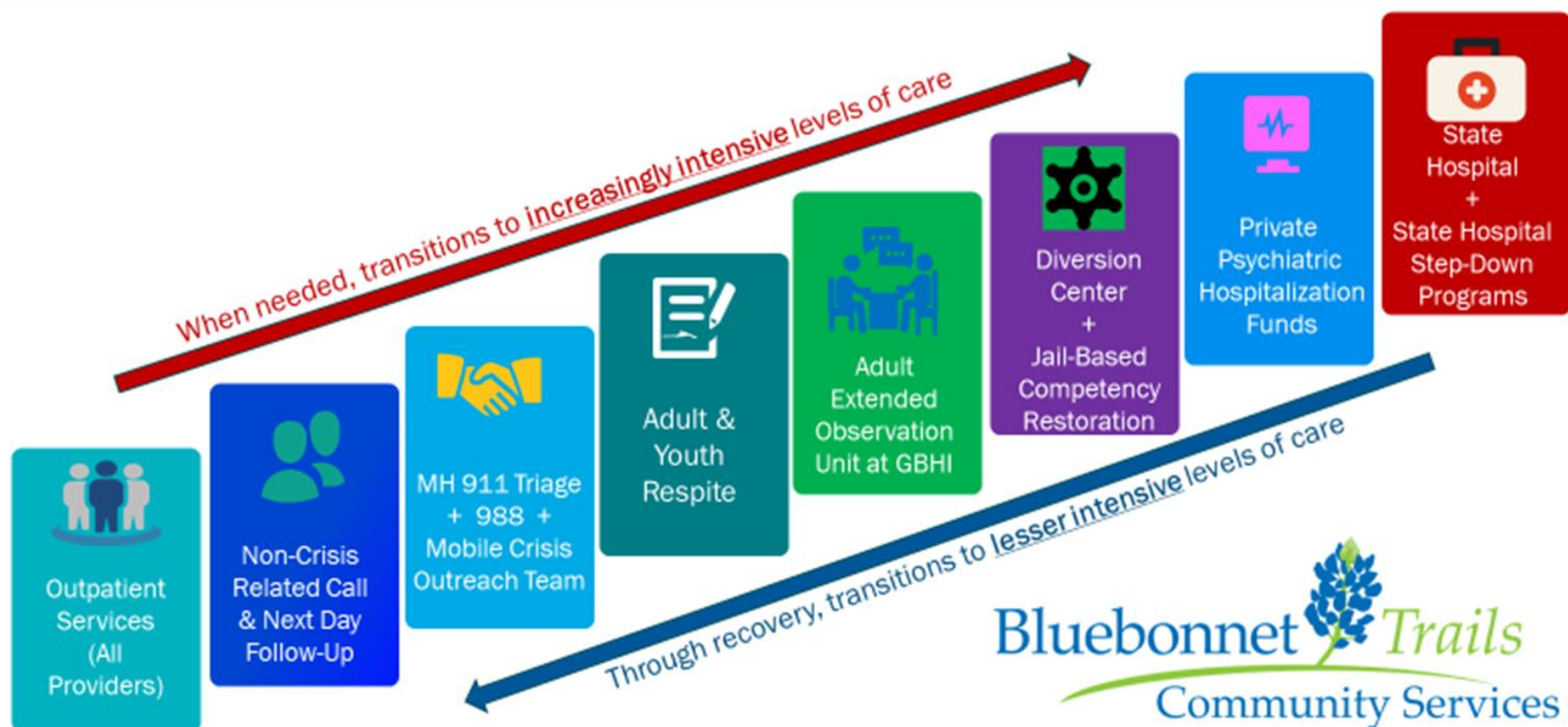
- A variety of Diversion Center models are growing across Texas. Some serve as Triage Centers and may serve persons with IDD.





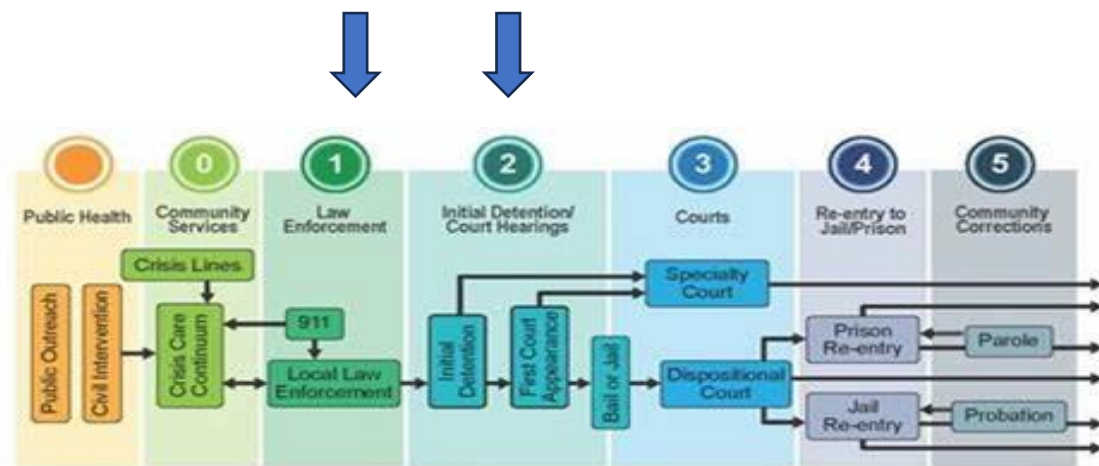
# MENTAL HEALTH CONTINUUM OF CARE

# 2023



Bluebonnet  Trails  
Community Services

# Jail Partnerships





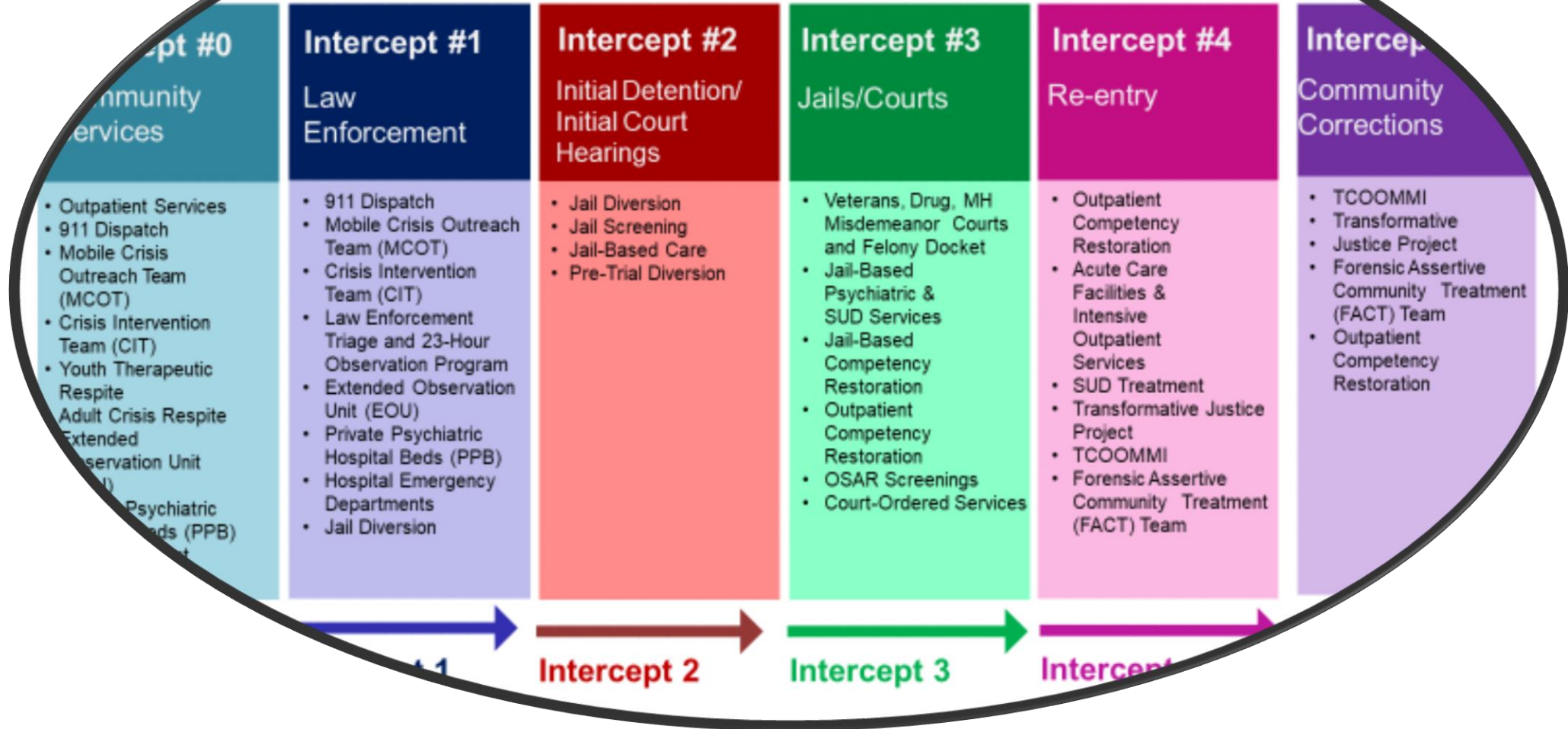
# TLETS data and IDD Crisis Specialists

- Daily booking data with exact matches are sent to LIDDA staff
- LIDDAs employ IDD Crisis Specialists who follow up with individuals in community and jail
- IDD Crisis Specialist can coordinate with individual, family, service providers



# Key Points: Justice-Involved Services

## Williamson County Sequential Intercept Model (SIM) Mapping



# Jail Navigators In Reach Efforts

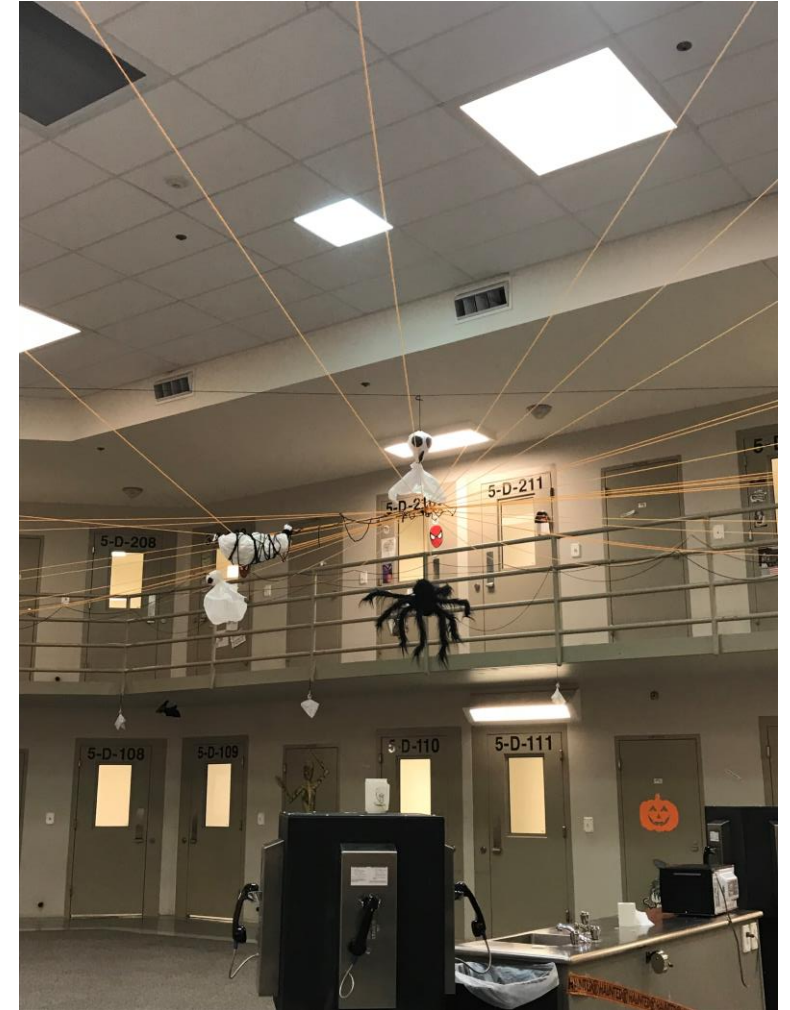
## Building a better local strategy

- Community Services/Intervention is always our first effort
- Diversion from Jail when possible (Pre-Post Booking)
- Initiate services in Jail quickly and effectively
- In Reach/Competency leads
- Outpatient referrals/warm hand off at release



# StarCare's Special Needs Pod/Jail Based Competency Program

- LIDDA/LMHA serve inmates with services in the jail
- May involve Outpatient Competency or Jail Based Competency Services
- Connection to Courts
- Planning for Services at Release





Questions

